

Dometic. The Satisfaction Network.

HiPro



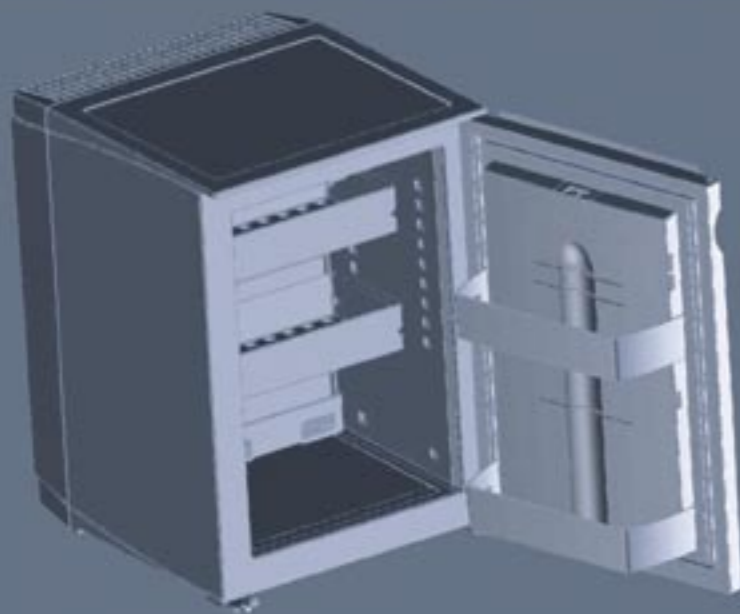
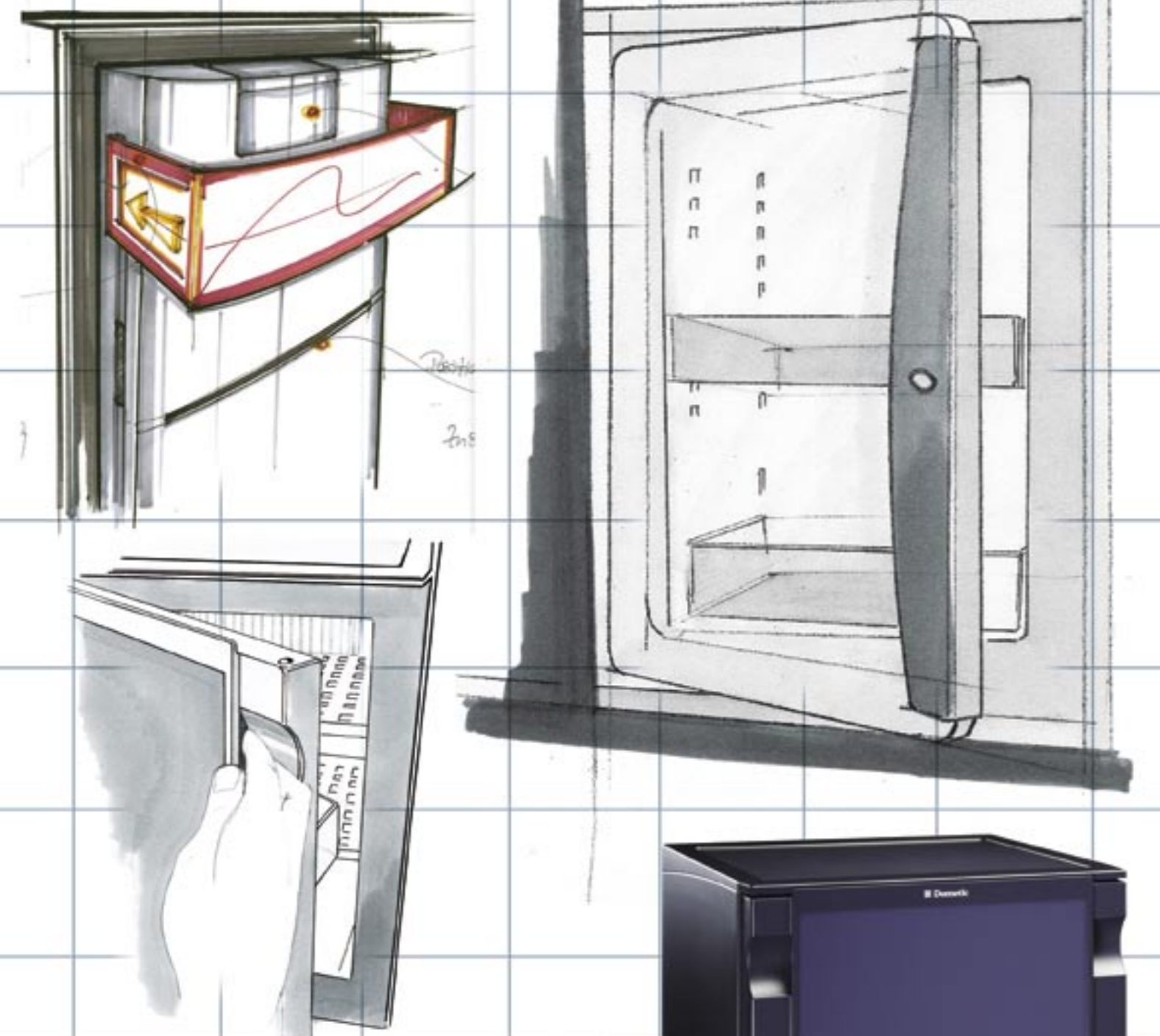
Dometic HiPro miniBars

The Original has just been reinvented.



 **Dometic** The Sign of Comfort

Wetajeden; Vanzjet "Hans Minibar"



Dometic. HiPro miniBars.

■ The only miniBar featuring HiPro technology.

HiPro is the official initiation of Dometic's new generation of miniBars – the outcome of more than eighty years of continuous research and development. In order to ensure maximum customer satisfaction, we have scrutinised all the expectations in terms of comfort and technology. The result has to be seen. The new HiPro miniBars. Innovative thinking perfectly put into practice.

HiPro MINIBARS stand out, thanks to a progressive design and a variety of innovative technological details which are uniquely combined. In fact they are so unique that we gave them a new name: HiPro technology.

HiPro technology evokes a whole new quality dimension – something you can only expect from Dometic.

HiPro

- Innovative design
- Modular system for drawers, shelves and interior door racks
- Inner door in the "Bottle Body" design
- Fuzzy Logic II Energy Control
- Set-up diagnosis via LED
- Unique, sensor-controlled surveillance of the cooling unit (CUC System)
- Certified lowest energy consumption
- Sensor-controlled LED interior light
- Door opening control system via LED (optional)

■ The Satisfaction Network.



AT DOMETIC, we perceive ourselves as system suppliers and experts in professional In-Room marketing, which is essential to satisfy your guests. Our far-stretched service network covers more than 180 countries and offers personal support on all continents. Experts ensure competent on-site advice and comprehensive after-sales support.

THIS IS HOW DOMETIC achieves maximum satisfaction on either side – be it hotel owners, hotel managers or your guests. And it explains why hotel managers all over the world consider Dometic as their partner of choice. Dometic is undeniably the No. 1 with more than 4 millions installed miniBars worldwide. It has a lot to do with our expertise, accumulated in the 8 decades following our inventing the absorption technology. You can sense it, but you can't copy it.

Dometic HiPro miniBars – developed with maximum satisfaction in mind



Certified lowest energy consumption

Best results ever for absorption-type miniBars; independently tested (in compliance with ISO-7371 at 25° C outside temperature and 7° C cooling temperature) and guaranteed.



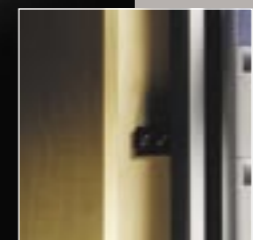
Sensor-controlled LED interior light

State-of-the-art illumination for a tempting presentation of goods.



Door opening control system via LED

Helps save costs by signalling at a glance whether a miniBar needs to be checked or refilled.



Sliding hinge

Allows easy opening thanks to a flexible connection of both miniBar and furniture door.



Interchangeable door decor panel

A variety of design themes for perfect integration into any room's interior.



ISO 9001 and ISO 14001

Superior quality and eco-friendliness, as certified by EMAS, as well as Eco Audit from start of production onwards.



Absorption

The basis of noiseless cooling comfort – makes an ideal cooling technology in hotel rooms.



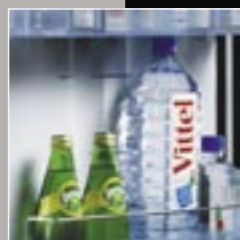
Modular system for drawers and shelves

For optimal product presentation and convenient service; you choose the interior layout that's ideal for the specific assortment of beverages.



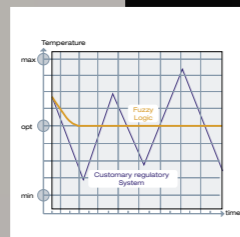
Inner door featuring "Bottle Body" design

Ideal for 1.5 litre bottles.



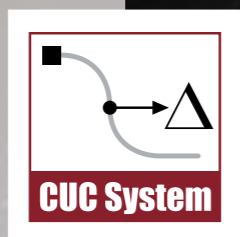
Fuzzy Logic II

Our further improved, patented software to regulate the energy consumption and monitor the miniBar functions.



Unique, sensor-controlled monitoring of cooling unit (CUC System)

Guaranteed reliability thanks to a continuous check of all functions.





The HiPro 3000 miniBar always makes a good impression, even when built in.

HiPro 3000

Extremely compact HiPro miniBar with a sensationally low energy consumption – unique in the 30-litre class.

HiPro 3000 is available in Basic and Standard version.

| | |
|-------------------------------------|-----------------|
| Product class [litres] | 30 |
| Facings [in 0.33l cans] | 14 |
| Dimensions [H x W x D in mm] | 527 x 388 x 418 |
| Consumption [kWh/24h] | 0,6 |

OPTIONS

- Variable door hinge "clip & click"
- LED door opening control system
- Infrared remote control
- Sliding hinge
- Choice of door decor panels
- Lock



A back cover in the HiPro Design is ideal for free-standing units. Available as an option for HiPro 4000.



Two who get along just great: The HiPro 4000's optional sliding hinge enables convenient door opening.

HiPro 4000

The mega star in the 40-litre class: Dometic's HiPro 4000 miniBar sets the standards of comfort and ensures maximum satisfaction.

HiPro 4000 is available in Basic, Standard, Deluxe and Premium versions as well as in the "HiPro Vision" version.

| | |
|-------------------------------------|-------------------------------------------------------------------------|
| Product class [litres] | 40 |
| Facings [in 0,33l cans] | 24 |
| Dimensions [H x W x D in mm] | 559 x 405 x 452 601 x 405 x 472 (with back cover and 42mm stands) |
| Consumption [kWh/24h] | 0,7 |

OPTIONS

- Variable door hinge "clip & click"
- LED door opening control system
- Infrared remote control
- Back cover
- Vision glass door
- Sliding hinge
- Lock
- Stands (42mm high)



Second shelf as optional extra



Space for 30 facings means a high degree of flexibility to attractively present your selection of products.



Dometic's miniBar HiPro Vision Deluxe can be harmoniously integrated into the interior decoration of any hotel room – simply a great design!

HiPro 6000

The HiPro 6000 gives you lots of space to effectively present a comprehensive assortment of beverages and snacks.

HiPro 6000 is available in Basic and Standard version.

| | |
|-------------------------------------|-----------------|
| Product class [litres] | 60 |
| Facings [in 0,33l cans] | 30 |
| Dimensions [H x W x D in mm] | 568 x 490 x 475 |
| Consumption [kWh/24h] | 0,9 |

OPTIONS

- Variable door hinge "clip & click"
- LED door opening control system
- Infrared remote control
- Sliding hinge
- Choice of door decor panels
- Lock

HiPro Vision

Great design from every angle: With its unique glass door, this HiPro 4000 miniBar version puts a particular spotlight on the displayed goods.

HiPro Vision is available with pull-out-shelf or drawer.

| | |
|-------------------------------------|-------------------------------------------------------------------------|
| Product class [litres] | 40 |
| Facings [in 0,33l cans] | 12 |
| Dimensions [H x W x D in mm] | 559 x 405 x 465 601 x 405 x 485 (with back cover and 42mm stands) |
| Consumption [kWh/24h] | 1,1 |

OPTIONS

- Variable door hinge "clip & click"
- LED door opening control system
- Infrared remote control
- Back cover
- Lock
- Stands (42mm high)

■ Modular system to meet individual preferences

BASIC

Equipped with 2 long pull-out shelves and flat inner door.



STANDARD

Equipped with 2 short pull-out shelves, inner door with 2 multi-functional racks, one of them equipped with a bottle holder for large bottles, the other is for miniature bottles. Inner door featuring "Bottle Body" design for 1.5-litre bottle.



DELUXE

Equipped with 2 long pull-out drawers and flat inner door. Only available for HiPro 4000.



PREMIUM

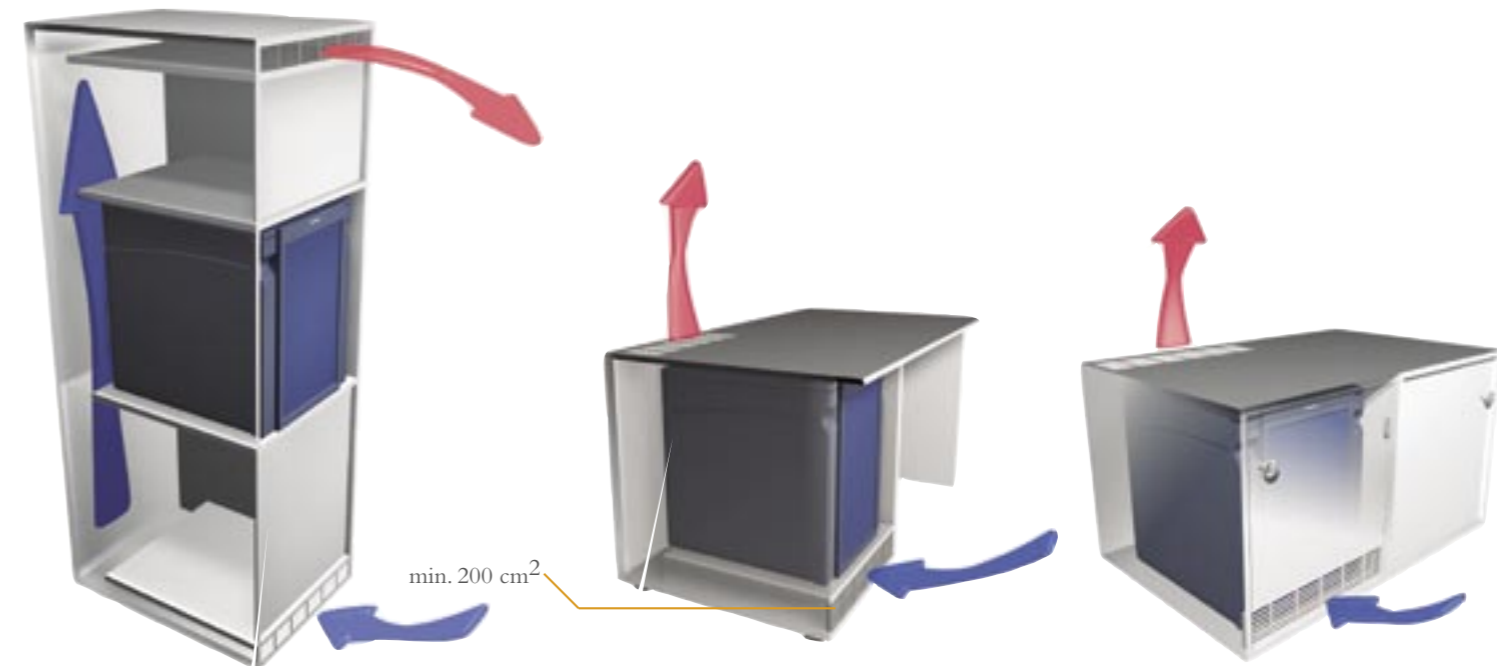
Equipped with 2 short pull-out drawers, inner door with 2 multi-functional racks – one of them equipped with a bottle holder for large bottles, the other is for miniature bottles. Inner door featuring "Bottle Body" design for 1.5-litre bottle. Only available for HiPro 4000.



■ Ventilation

IF YOU CONSIDER integrating a Dometic mini-Bar into the furniture, you should never forget that the cooling unit needs fresh air! These sketches show various ways how to integrate and ventilate a mini-Bar.

THE OPEN CROSS-SECTION for fresh air supply and extracted air must be at least 200 cm², and the air flow around the cooling unit should be unhindered. If you have any questions, Dometic's experts are happy to answer them.



■ Sufficient ventilation can be accomplished even in furniture that reaches higher up. For cooling purposes, the air needs to flow freely around the cooling unit and exit unhindered at the top.

■ The opening for supply air can also be built into the furniture plinth. Please note that the footprint must not hinder the air from passing the cooling unit freely.

■ Should you want to place the miniBar on the floor panel of your furniture, make sure to use the 40mm feet (optional accessory). These and an air grille integrated in the furniture door ensure sufficient ventilation. Both miniBar and furniture door can be connected via a swing hinge which compensates for the different pivot points.

■ **Dometic.**
Your system supplier.

DOMETIC is a customer driven, world-leading provider of innovative leisure products for the caravan, motorhome and marine markets. Dometic offers a complete range of air conditioners, refrigerators, awnings, cookers, sanitation systems, lighting, windows, doors and other equipment that makes leisure life more comfortable away from home.

Dometic also provides refrigerators for specific use in hotel rooms, offices and for storage of medical products and wine. Dometic's products are sold in almost 100 countries and are produced mainly in Dometic's own production facilities around the world. Annual sales amount to approximately 750 MEUR. Dometic has more than 4.400 employees.



Dometic.
Your guarantee for satisfied guests.

■ **The Dometic miniBar expert**
near you.

**Regional Office
South Africa**

Dometic (PTY) Ltd.
Phone + 27 13 933 3254
Fax + 27 13 933 3030
jackie.oneill@eleisure.co.za

**Regional Office
Asia**

Dometic Pte. Ltd.
Phone + 65 6 795 3178
Fax + 65 6 862 6620
chandra8@dometic.com.sg

**Regional Office
Middle East & North
Africa**

Dometic AB
Phone + 971 4 321 2160
Fax + 971 4 321 2170
dometic@eim.ae

**Export Office
Stockholm**

Dometic AB
Phone + 46 8 501 025 00
Fax + 46 8 501 025 98
sales@dometic.se

Algeria

Hospital Management Consulting
Phone + 213 21 920035
Fax + 213 21 922794

Australia

Dometic Pty Ltd.
Phone + 61 395 455 655
Fax + 61 395 455 966
dometic@dometic.com.au

Bahrain

Bahraingas Co. W.L.L.
Phone + 973 531111
Fax + 973 532112
bahgas@batelco.com.bh

Bangladesh

Unity Services Ltd.
Phone + 880 2 988 1306
Fax + 880 2 988 3025
modunity@bdmail.net

Canada

Dometic Corporation
Phone + 1 519 653 4390
Fax + 1 519 653 4243
lodging@dometicusa.com

Croatia

Optimist d.o.o.
Phone + 385 1 2308 094
Fax + 385 1 2336 386
optimist@net.hr

Cyprus

Hadjikyriakos & Sons Ltd.
Phone +357 22 872 111
Fax +357 22 663 391
info@hadjikyriakos.com.cy

Denmark

Dometic AB
Phone +45 45 26 45 50
Fax +45 45 26 45 59
info@dometic.dk

Egypt

Basco Engineering & Trading
Phone +20 2 2906997
Fax +20 2 2906774
basco@link.net

Finland

Dometic Oy
Phone +358-9-68 66 110
Fax +358-9-68 66 11 22
info@dometic.fi

Greece

Samaras Bros.
Phone + 30 2310 321 091
Fax + 30 2310 321 090
polief96@otenet.gr

Hong Kong/Macau/China

Dometic Pte Ltd
Phone + 852 2489 9228
Fax + 852 2489 9279
louis@dometic.com.hk

Hungary

Dometic Rt.
Phone + 36 57 41 6371
Fax + 36 57 41 6490
erzsebet.nemes@dometic.hu

India / Nepal

Eagle Forgings
Phone + 91 11 26918430
Fax + 91 11 26845484
ajay@eagle-grp.com

Indonesia

P.T. EMS Indoappliances
Phone + 62 21 830 5746
Fax + 62 21 831 7215
teguh.hidayat@emsindo.com

Iran

Tarani Technical Trading
Phone +98 21 87116-13/-14
Fax +98 21 872 8030
info@taranico.com

Israel

Hotelo Ltd
Phone +972 3 927 9713
Fax +972 3 927 9716
gideon.bs@hotelo.com

Jordan

Projects Supply Technology Co. Ltd.
Phone + 962 6 5536270
Fax + 962 6 5536276
suhair@next.jo

Korea

Hotel Restaurant Services
Phone + 82 2 3453 5000
Fax + 82 2 3453 5001
hschung@hrs.co.kr

Lebanon

Electro Group S.A.R.L.
Phone + 961 1 398 558
Fax +961 1 397 201
cckgp@netgate.com.lb

Malaysia

EMS Asia Group SDN.BHD
Phone + 603 55 69 3968
Fax + 603 55 6939 69
siva@ems-asiagroup.com

Malta

Forestals Group of Companies
FGL Commercial Sales Ltd.
Phone +356 2343 6210
Fax +356 2134 4709
atabone@forestals.com

Morocco

Sacom S.A.R.L.
Phone + 212 22 487579
Fax + 212 22 264650

New Zealand

Leisure Appliances New Zealand Ltd.
Phone + 64 4 380 9392
Fax + 64 4 380 9398
customerservices@nzleisure.co.nz

Norway

Dometic AB
Phone +47 81 50 01 40
Fax +47 22 63 55 66
truls.lie@dometic.no

Oman

Bahwan Trading Co. LLC.
Phone + 968 793 741
Fax + 968 700 442
ceg@suhailbahwargroup.com

Pakistan

Anisons
Phone + 92 21 5834971
Fax + 92 21 5830579
anisons@cyber.net.pk

Philippines

Technolux
Phone + 632 896 4941
Fax + 632 899 4528
rgs@technolux.net

Poland

Electrolux Poland Sp. Zo.o.
Phone + 48 22 434 73 00
Fax + 48 22 434 73 02
renata.fedorowicz@electrolux.com

Singapore

Dometic Pte. Ltd.
Phone + 65 6 795 3177
Fax + 65 6 862 6620
dometic@dometic.com.sg

Slovenia

Team Commerce D.O.O.
Phone + 386 5 6300760
Fax + 386 5 6284 367
info@team-commerce.si

Sri Lanka

S.A. Electricals Pvt. Ltd.
Phone + 94 11 2693265
Fax + 94 11 2691754
jakbs@dialogsl.net

Sweden

Dometic AB
Phone + 46 8 501 025 31
Fax + 46 8 501 025 98/99
hans.hermansson@dometic.se

Syria

Modern Technology Co.
Phone + 963 11 6120920
Fax + 963 11 6119425

Taiwan

The EsLite Corporation
Phone + 886 2 2503 7687
Fax + 886 2 2506 9372
jacktsai@eslite.com.tw

Thailand

Thanakorn Holding Co. Ltd.
Phone + 66 2 718 0118
Fax + 66 2 718 0088
thanakorn.thai@usa.net

Turkey

Enta A.S.
Phone + 90 212 292 8900
Fax + 90 212 245 4731
info@entaturk.com

UK / Ireland

Dometic Ltd.
Phone + 44 1 582 494 111
Fax + 44 1 582 490 197
info@dometic.co.uk

United Arab Emirates

Jumbo Electronics Co. Ltd. (LLC)
Phone + 971 4 336 7 999
Fax + 971 4 336 0 495
dometic.minibar@jumbo.ae

USA

Dometic Corporation
Phone + 1 574 294 8665
Fax + 1 574 294 3369
lodging@dometicusa.com

Vietnam

Do Business Consulting
Phone + 84 8 8242426
Fax + 84 8 8242428
dbconsult@hcm.vnn.vn

Yemen

Elaghil Trading Co. Ltd.
Phone + 967 1 272428
Fax + 967 1 272850

Subject to errors and changes without notice. Printed on chlorine-free, bleached paper 02/05.